

# Dinghy Line





## Dinghy Index:

- 02** Company
- 04** Tridente 16'
- 05** Skipper
- 06** Tridente 14'
- 08** Flying Junior
- 09** X-14'
- 10** Baby Boat
- 11** Phantom line
- 13** Contact



## → Company

Our shipyard is run by people who all love and live for the sea.

We believe that our expert team, with their wealth of experience, are the key to the success that C.N.A. have achieved in recent years. We work closely with our customers, ranging from sailing schools to experienced sailors.

Our expert team will meet your specific requirements, whatever they may be, so that all that is left to do is to set sail and enjoy the sea. C.N.A. Cantiere Nautico offer the highest possible quality at highly competitive prices.

It has been over 40 years since C.N.A. was first established. Throughout this time, we have continually been on the lookout for innovative products, technologies and models.

We like to consider every little success a brand-new starting point in our mission to provide unparalleled quality.





02 20



CE

→ Tridente 16'

# Tridente 16'



Total length	5.00 m
Max B.	1.92 m
Weight	210 kg
Ov. Sail A.	16 m <sup>2</sup>

**Optionals:**

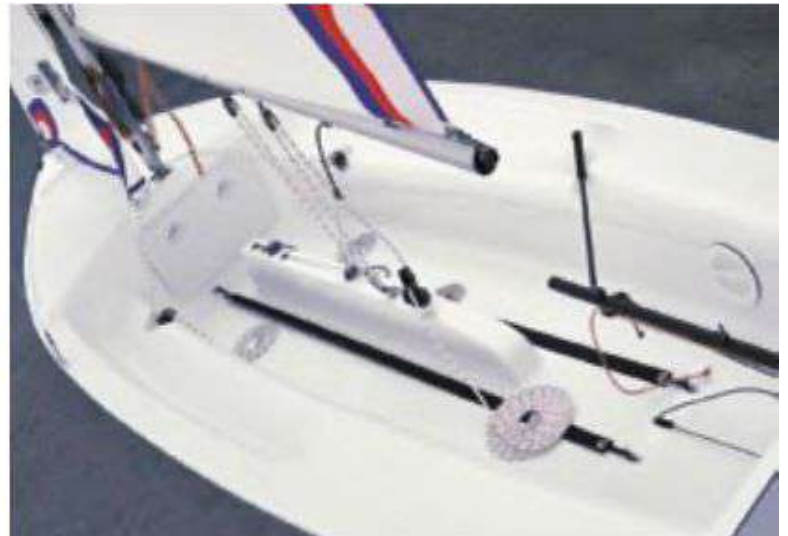
- Aluminium launching trolley
- Furling mainsail
- Boat cover
- Spinnaker
- Trapeze kit
- Swim ladder
- Rubber saddle tank

Designed for sailing schools, families and recreational sport sailing activities, the Tridente 16' has become one of the dinghies most commonly found in sailing clubs and holiday resorts.

An extremely versatile model with a large self-bailing cockpit, ergonomic seats and watertight anchor lockers, as well as a wide range of optional extras.

Hull made of fibreglass reinforced with a sandwich of termanto and biaxial glass fabric. Mast and boom in anodised aluminium, fin and rudder in fibreglass, mainsail and jib in dacron.

Mainsail with single line reefing. Ronstan/Viadana deck hardware. Bow eyebolt, 3 bitts on deck, watertight locker, 2 watertight aft peaks, anchor cockpit locker, stern outboard engine mount.



# Skipper

 Skipper



Skipper is characterized by Comfort, speed and safety that are guaranteed by the stability offered by the hull design and the option to reduce the sail surface area even whilst in motion.

The simplified equipment considerably reduces the time of rigging, there is plenty of storage space, and the ergonomic counter-moulded bench seats on deck allow the crew to ensure perfect control of the boat. Hull made of fibreglass reinforced with a sandwich of termanto and biaxial glass fabric.

Mast and boom in anodised aluminium, fin and rudder in fibreglass, mainsail and jib in dacron. Mainsail with single line reefing. Ronstan/Viadana deck hardware. Bow eyebolt, one mooring bitt, watertight locker, 2 watertight aft peaks. Aft outboard engine mount.

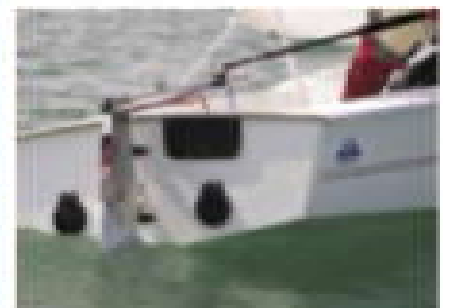


Total length	4.00 m
Max B.	1.60 m
Weight	90 kg
Ov. Sail A.	11 m <sup>2</sup>

#### Optionals:

- Aluminium launching trolley
- Furling mainsail
- Boat cover
- Spinnaker
- Trapeze kit
- Swim ladder
- Rowing kit
- Divisible mast

0.5



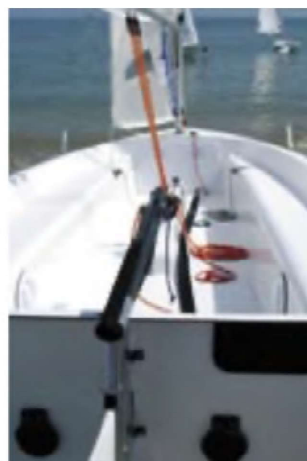
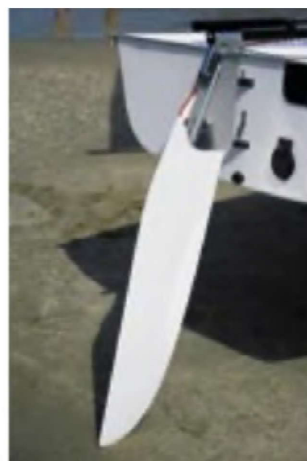
CE

➔ Tridente 14'

# Tridente 14'







At just 4.30 metres in length it combines, in a balanced manner, all the positive characteristics you would expect of a fibreglass dinghy: it is light enough for a two-person crew, and sturdy, spacious and comfortable without compromising on the performance that makes it a delight to row.

Hull made of fibreglass reinforced with a sandwich of termanto and biaxial glass fabric. Mast and boom in anodised aluminium, fin and rudder in fibreglass, full batten mainsail made of laminate, jib in dacron. Mainsail with single line reefing.

Ronstan deck hardware. Bow eyebolt, retractable bitt, watertight locker, 2 watertight aft peaks. Aft outboard engine mount.



Total length	4.30 m
Max B.	1.70 m
Weight	140 kg
Ov. Sail A.	13 m <sup>2</sup>

**Optionals:**

- Aluminium launching trolley
- Furling mainsail
- Boat cover
- Spinnaker
- Trapeze kit
- Swim ladder
- Rowing kit



CE

→ Flying Junior



# F.J.

Total length	4.04 m
Max B.	1.78 m
Weight	85 kg
Ov. Sail A.	9.30 m <sup>2</sup>



**Optionals:**

- Aluminium launching trolley
- Furling mainsail
- Boat cover
- Spinnaker
- Trapeze kit
- Swim ladder
- Rowing kit

The recently rediscovered FJ is a technical boat designed and equipped for excellence.

The optional "Race pack" is ideal for enhanced racing techniques. This boat can meet the needs of even the most demanding sportspeople. Hull made of fibreglass reinforced with a sandwich of termanto and biaxial glass fabric.

Mast and boom in anodised aluminium, fin and rudder in fibreglass, mainsail and jib in dacron. Ronstan/Viadana deck hardware. Fibreglass partner with 2 spinnaker pockets.



0.8

# X. 14'

CE

➔ X. 14'



Total length	4.06 m
Max B.	1.46 m
Weight	70 kg
Ov. Sail A.	7.20 m <sup>2</sup>

### Optionals:

- Aluminium launching trolley
- Boat cover



The tilting fin and absence of shrouds or sterndraw make the X 14' quick and easy to assemble. Simple and intuitive, it can be sailed by a single person and can accommodate one or more passengers.

Light weight with a collapsible mast, it is suitable for transport by car or camper van. Hull made of fibreglass reinforced with a sandwich of termanto and biaxial glass fabric. Split mast and boom in anodised aluminium, without shrouds, fin and rudder in fibreglass, mainsail in dacron. Ronstan/Viadana deck hardware. 1 locker in watertight cockpit with fabric container.

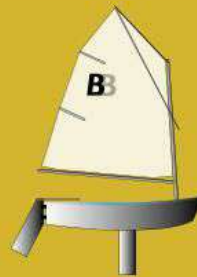


0.9

CE

➔ Baby Boat

# Baby boat



Total length	2.30 m
Max B.	1.13 m
Weight	40 kg
Ov. Sail A.	3.25 m <sup>2</sup>

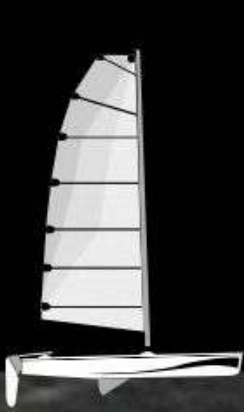
**Optionals:**  
Aluminium launching trolley  
Boat cover

This model is designed for children, beginners and experts wishing to practise recreational sailing or racing. Hull made of fibreglass reinforced with a sandwich of termanto and biaxial glass fabric.

Mast and boom in anodised aluminium, fin in fibreglass, rudder in wood, mainsail in dacron.

Ronstan/Viadana deck hardware. 1 inflatable stern buoyancy apparatus.

# Phantom Line



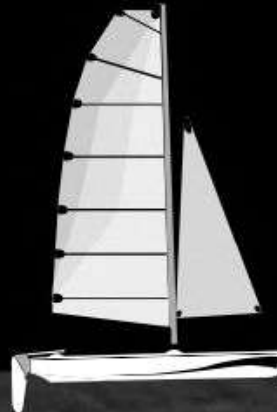
→ Phantom 14'

Total length:	4.30 m
Width:	2.20 m
Disp.:	90 kg
Sail Area:	10 m <sup>2</sup>
Mast H:	7.50 m



→ Phantom 16'

Total length:	4.85 m
Width:	2.30 m
Disp.:	120 kg
Sail Area:	16 m <sup>2</sup>
Mast H:	8.12 m
Gennaker:	12 m <sup>2</sup>



→ Phantom Club

Total length:	5.05 m
Width:	2.45 m
Disp.:	120 kg
Sail Area:	16 m <sup>2</sup>
Mast H:	8.12 m
Gennaker:	12 m <sup>2</sup>



→ Phantom 18'

Total length:	5.45 m
Width:	2.45 m
Disp.:	140 kg
Sail Area:	18 m <sup>2</sup>
Mast H:	8.50 m
Gennaker:	14 m <sup>2</sup>



The phantom line consists of 4 catamarans, each with its own characteristics that adapt to the user **Phantom 14'**: It is the smallest boat, and is light and easy to handle even on the ground.

**Phantom 16'**: It represents a compromise, since it strikes the right balance between practicality and fun.

**Phantom Club**: It is the catamaran for sailing schools, tourist resorts and families who like to sail a quality boat in peace and safety.

**Phantom 18'**: It's the ultimate for those who like to feel a thrill



**C.N.A CANTIERE NAUTICO srl**

Via Cagnona, 913 - 47030 S. Mauro  
Pascoli a Mare (FC) Italy. tel. +39  
0541\_938040 - fax +39 0541\_938084  
[www.centronauticoadriatico.com](http://www.centronauticoadriatico.com)  
[info@centronauticoadriatico.com](mailto:info@centronauticoadriatico.com)

